



GLOBAL
ENVIRONMENTAL
ENGINEERING INC.

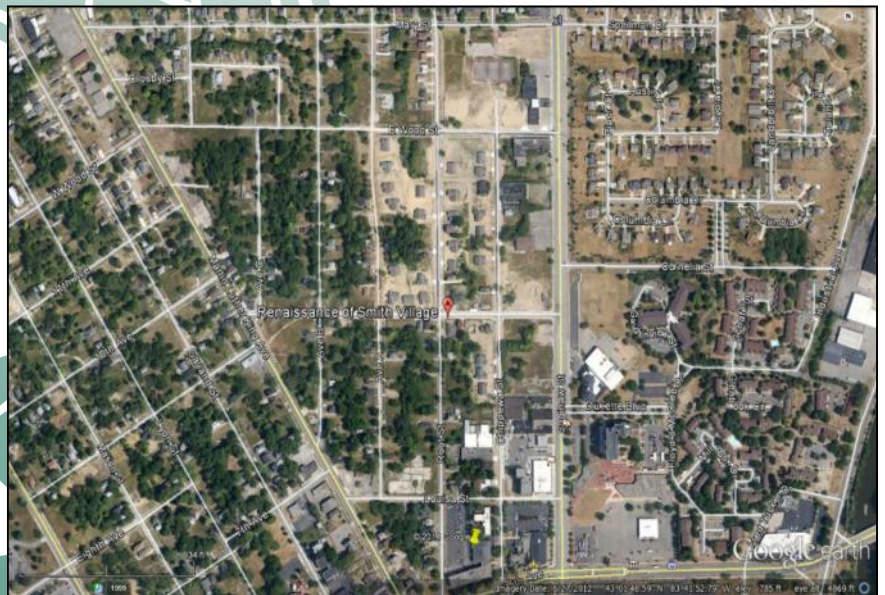
Client: Genesee County

Project Budget: \$62,581.00
Contract Start Date: Jan, 2015
Completion Date: Jan, 2015



Environmental Assessment Brownfield Study City of Flint, Michigan

In late 2011, Global was contracted by the Genesee County Land Bank and City of Flint to prepare an Environmental Assessment (EA) in accordance with guidelines set for by the U.S. Department of Housing and Urban Development (HUD) 24 CFR Part 58 for the Smith Village Project. Global utilized the HUD recommended format during the preparation of the EA including completion of the Statutory Checklist and Environmental Assessment Checklist. As part of the EA process, Global completed several Phase I ESA, Phase II ESA, and Soil Vapor Surveys on properties throughout the Smith Village area at. In addition Global completed a Due Care Plan approved by the Michigan Department of Environmental Quality (MDEQ). Evaluated environmental conditions of residential and commercial structures. Communicated between regulatory agencies and GCLBA. Asbestos inspections completed to residential/commercial structures. Includes sampling and identifying hazardous materials.



www.globaleei.com